

ANNUAL REPORT

OF THE

**RECREATIONAL FISHERIES
INFORMATION NETWORK IN
THE SOUTHEAST REGION
[RecFIN(SE)]**

JANUARY 1, 1993 - DECEMBER 31, 1993

FEBRUARY 1994

REC94-1

INTRODUCTION

The Southeast Recreational Fisheries Information Network [RecFIN(SE)] is a three year pilot project to establish a state-federal cooperative program to collect, manage, and disseminate statistical data and information on the recreational fisheries of the Southeast Region.¹

The need for a comprehensive and cooperative data collection program has never been greater because of the magnitude of the recreational fisheries and the differing roles and responsibilities of the agencies involved. Many southeastern stocks targeted by anglers are now depleted, due primarily to excessive harvest, habitat loss, and degradation. The information needs of today's management regimes require data which are statistically sound, long-term in scope, timely, and comprehensive. A cooperative partnership between state and federal agencies is the most appropriate mechanism to accomplish these goals.

Efforts by state and federal agencies to develop a cooperative program for the collection and management of recreational fishery data in the Region began in the mid to late 1980s. In 1992, the National Marine Fisheries Service formally proposed a planning activity to establish the RecFIN(SE). Planning was conducted by a multi-agency Plan Development Team through October 1992 at which time the program partners approved a Memorandum of Understanding (MOU) which established clear intent to implement the RecFIN(SE). Upon signing of the MOU, a RecFIN(SE) Committee was established.

The scope of the RecFIN(SE) includes the Region's recreational fisheries for marine, estuarine, and anadromous species, including shellfish. Constituencies served by the program are state and federal agencies responsible for management of fisheries in the Region. Direct benefits will also accrue to federal fishery management councils, the interstate marine fisheries commissions, the National Park Service, the U.S. Fish and Wildlife Service, and the NOAA National Marine Sanctuaries Program. Benefits which accrue to management of fisheries will benefit not only recreational fishermen and the associated recreational fishing industry, but the resources, the states, and the nation.

The mission of the RecFIN(SE) is to cooperatively collect, manage, and disseminate marine recreational fisheries statistical data and information for the conservation and management of fishery resources in the Region; and to support the development and operation of a national program. The four goals of the RecFIN(SE) are:

- planning, management, and evaluation of data collection and management activities;
- implementation of data collection activities;
- establishment and maintenance of a data management system; and
- support for the establishment of a national program.

¹The Southeast Region (the Region) includes Alabama, Florida, Georgia, Louisiana, Mississippi, North Carolina, Puerto Rico, South Carolina, Texas, and the U.S. Virgin Islands.

PROGRAM ORGANIZATION

The organizational structure of the program consists of the RecFIN(SE) Committee, three geographic subcommittees (Caribbean, Gulf, and South Atlantic), ad hoc subcommittees (Administrative), technical work groups (Biological/Environmental, Data Base, and Social/Economic), and administrative support (Figure 1).

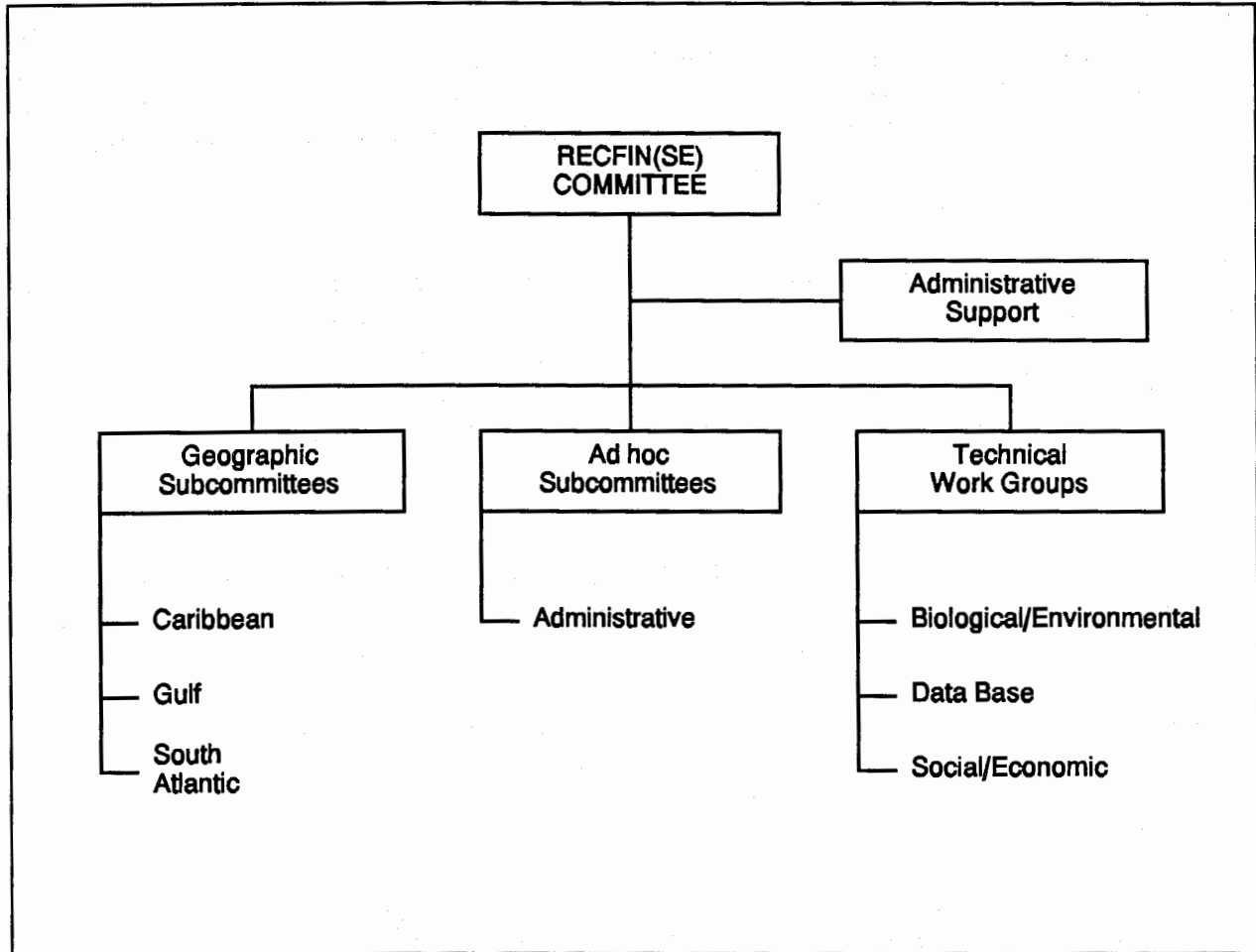


Figure 1. Organizational structure of the RecFIN(SE).

The RecFIN(SE) Committee consists of the signatories to the MOU or their designees, and is responsible for planning, managing, and evaluating the program. Agencies represented by signatories to the MOU are the National Marine Fisheries Service, Fish and Wildlife Service, National Park Service, Alabama Department of Conservation and Natural Resources, Florida Department of Environmental Protection, Georgia Department of Natural Resources, Louisiana Department of Wildlife and Fisheries, Mississippi Department of Wildlife, Fisheries, and Parks, North Carolina Department of Environment, Health, and Natural Resources, Puerto Rico Department of Natural Resources, South Carolina Wildlife and Marine Resources Department,

Texas Parks and Wildlife Department, U.S. Virgin Islands Department of Planning and Natural Resources, Caribbean Fishery Management Council, Gulf of Mexico Fishery Management Council, South Atlantic Fishery Management Council, Atlantic States Marine Fisheries Commission, and Gulf States Marine Fisheries Commission

The RecFIN(SE) Committee is divided into three standing subcommittees representing the major geographical areas of the Region: Caribbean, Gulf, and South Atlantic. These subcommittees are responsible for making recommendations to the Committee on the needs of these areas. Ad hoc subcommittees are established as needed by the RecFIN(SE) Committee to address administrative issues and technical work groups are established as needed by the RecFIN(SE) Committee to carry out tasks on specific technical issues. Coordination and administrative support of the RecFIN(SE) is accomplished through administrative structures established in the Caribbean, Gulf of Mexico, and South Atlantic areas.

PROGRAM ACTIVITIES

The RecFIN(SE) is a comprehensive program comprised of coordinated data collection activities, an integrated data management and retrieval system, and procedures for information dissemination. Activities during 1993 were associated almost entirely with staffing and planning. In respect to data management and collection, ongoing MRF surveys were conducted by various state and federal agencies. The RecFIN(SE) Committee reviewed and evaluated progress towards the integration of these surveys into the RecFIN(SE).

RecFIN(SE) Committee

Major RecFIN(SE) meetings were held in January, March and September 1993. The major issues that were discussed during these meetings include:

- establishment of written rules and standard operating procedures for its meetings;
- establishment of the geographical subcommittees;
- completion of the Strategic Plan;
- identification of tasks to be accomplished in 1993 and establishment and charging the Administrative Subcommittee and the Biological/Environmental, Social/Economic, and Data Base Work Groups to begin work on these tasks;
- finalization of the administrative structures for staffing of the RecFIN(SE);
- development of the 1993 Operations Plan which presented the first year's activities in data collection, data management, and information dissemination;
- begin the development of the 1994 Operations Plan;

- review the activities and accomplishments of 1993;
- review findings of technical work groups, and receive recommendations from these groups for activities to be carried out during 1994;
- preparation of a proposal for financial assistance to support future activities of the RecFIN(SE); and
- begin internal evaluation of the program in preparation for an external review.

The committee members and alternates are listed in Table 1. Minutes for all the meetings are included in Appendix A and the approved 1993 Operations Plan is included in Appendix B.

Subcommittee and Work Groups

RecFIN(SE) subcommittees and work groups met this year to provide recommendations to the Committee to formulate administrative policies, address specific technical issues for accomplishing many of the RecFIN(SE) goals and objectives and examine other issues as decided by the Committee. Subcommittee and work group members are listed in Table 2 and the Social/Economic and Data Base Work Group Reports are included in Appendix C. Their activities included:

- The Administrative Subcommittee met in December 1993 (via conference call) to discuss the development of an outline for the 1995 program review.
- The Biological/Environmental Work Group met in February (via conference call), March and July 1993 to address such issues as identification of the biological and environmental components of the fishery and data priorities for each component, identification of biological and environmental data elements required for each fishery component, identification and determination of standards for biological and environmental data collection, including statistics, training, and quality assurance and quality control standards, and prioritization of MRF data collection projects for incorporation into the RecFIN data management system.
- The Social/Economic Work Group met in March and October (via conference call) 1993 to begin the identification of the social and economic data necessary to evaluate the impacts of fisheries management activities as well as developing a priority list of MRF data collection projects for incorporation into the RecFIN data management system.
- The Data Base Work Group met in November 1993 (via conference call) to compile, using the lists developed by the other work groups, a final priority list for inclusion of MRF data in the RecFIN system.

Coordination and Administrative Support

Working closely with the Committee in all aspects of program coordination, administration, and operation was a major function of RecFIN(SE) coordination and administrative support. Other important coordination and administrative activities included but were not limited to providing coordination and logistical support, including communications and organization of meetings for the Committee, subcommittees, and work groups; serving as liaison between the Committee, other program participants, and other interested organizations; preparing annual operations plans under the direction of the Committee; preparing and/or supervising and coordinating preparation of selected documents, including written records of all meetings; and distributing approved RecFIN(SE) information and data in accordance with accepted policies and procedures as set forth by the Committee. Activities of the RecFIN(SE) for 1993 - 1995 are outlined in Table 3.

Publications

The following documents were published and distributed by the RecFIN(SE) in 1993:

- Biological/Environmental Work Group. 1993. *Biological/Environmental Work Group Report*. Gulf States Marine Fisheries Commission, Ocean Springs. 32 pp.
- RecFIN(SE) Committee. 1993. *Strategic Plan. Recreational Fisheries Information Network for the Southeastern United States RecFIN(SE)*. REC93-1. Gulf and Atlantic States Marine Fisheries Commissions, Ocean Springs and Washington, D.C. 28 pp. + appendices.
- RecFIN(SE) Committee. 1993. *Marine Recreational Fisheries Data Collection Project Summaries*. REC93-2. Gulf States Marine Fisheries Commission, Ocean Springs. 78 pp.
- RecFIN(SE) Committee. 1993. *1993 Operations Plan for Recreational Fisheries Information Network for the Southeastern United States RecFIN(SE)*. Gulf States Marine Fisheries Commission, Ocean Springs. 12 pp.

If you are interested in any of these documents, they are available upon request from the Gulf States Marine Fisheries Commission office.

TABLE 1.

RecFIN(SE) COMMITTEE MEMBERS FOR 1993

Steven Atran
Gulf of Mexico Fishery Mgmt. Council
5401 W. Kennedy Blvd., #331
Tampa, FL 33609-2486
(813) 228-2815; FAX (813) 225-7015

John Brown
U.S. Fish and Wildlife Service
75 Spring Street, S.W.
Atlanta, GA 30303-3376
(404) 331-3588
Alternate: Wilson Laney

Jane DiCosimo
South Atlantic Fishery Mgmt. Council
1 Southpark Circle, #306
Charleston, SC 29407-4699
(803) 571-4366; FAX (803) 769-4520

Jack Dunnigan
Atlantic States Marine Fisheries Comm.
1776 Massachusetts Ave., NW, Suite 600
Washington, DC 20036
(202) 452-8700; FAX (202) 452-9110
Alternate: Lisa Kline

Albert Jones
National Marine Fisheries Service
Southeast Fisheries Science Center
75 Virginia Beach Drive
Miami, FL 33149-1003
(305) 361-4259; FAX (305) 361-4219

Henry Lazauski
Alabama Department of Conservation and
Natural Resources
P.O. Drawer 458
Gulf Shores, AL 36547-0458
(205) 968-7576; FAX (205) 968-7307

Ronald Lukens
Gulf States Marine Fisheries Commission
P.O. Box 726
Ocean Springs, MS 39564-0726
(601) 875-5912; FAX (601) 875-6604
Alternate: David Donaldson

Larry McEachron
Texas Parks and Wildlife Department
100 Navigation Circle
Rockport, TX 78382
(512) 729-2328; FAX (512) 729-1437
Alternate: Lee Green

Joseph O'Hop
Florida Dept. of Environmental Protection
100 Eighth Avenue, SE
St. Petersburg, FL 33701-5095
(813) 896-8626; FAX (813) 823-0166

Walter Padilla
Puerto Rico Dept. of Natural Resources
P.O. Box 3665, Marina Station
Mayaguez, PR 00681-3665
(809) 833-2025; FAX (809) 833-2410

John Pafford
Georgia Coastal Resources Division
1 Conservation Way
Brunswick, GA 31523-8600
(912) 264-7218; FAX (912) 262-2350

Miguel Rolón
Caribbean Fishery Management Council
Suite 1108, Banco de Ponce Building
Hato Rey, PR 00918-2577
(809) 766-5926; FAX (809) 766-6239

Thomas Schmidt
South Florida Research Center
Everglades National Park
P.O. Box 279
Homestead, FL 33030
(305) 242-7800; FAX (305) 242-7836

Ronald Schmied
National Marine Fisheries Service
Southeast Regional Office
9450 Koger Boulevard
St. Petersburg, FL 33702-2432
(813) 893-3144; FAX (813) 893-3111

Ann Seiler
Virgin Islands Div. of Fish and Wildlife
101 Estate Nazareth
St. Thomas, VI 00802
(809) 775-6762; FAX (809) 775-3972

Joseph Shepard
Louisiana Dept. of Wildlife and Fisheries
P.O. Box 98000
Baton Rouge, LA 70898-9000
(504) 765-2371; FAX (504) 765-2489

Michael Street
N.C. Division of Marine Fisheries
P.O. Box 769
Morehead City, NC 28557-0769
(919) 726-7021; FAX (919) 726-6062
Alternate: Paul Phalen

Tom Van Devender
Mississippi Bureau of Marine Resources
2620 West Beach Boulevard
Biloxi, MS 39531-4501
(601) 385-5860; FAX (601) 385-5864

Wayne Waltz
S.C. Wildlife and Marine Resources Dept.
P.O. Box 12559
Charleston, SC 29422-2559
(803) 762-5094; FAX (803) 762-5001

John Witzig
National Marine Fisheries Service
1335 East West Highway, F/RE1
Silver Spring, MD 20910-3225
(301) 713-2328; FAX (301) 588-4967
Alternate: Maury Osborn

TABLE 2.

RecFIN(SE) SUBCOMMITTEE AND WORK GROUP MEMBERS FOR 1993

Administrative Subcommittee

Walter Padilla
Puerto Rico Department of Natural Resources

Jack Dunnigan
Atlantic States Marine Fisheries Commission

Ronald Lukens
Gulf States Marine Fisheries Commission

Henry Lazauski
Alabama Department of Conservation and Natural Resources

Maury Osborn
National Marine Fisheries Service
Silver Spring

Albert Jones
National Marine Fisheries Service
Southeast Fisheries Science Center

Wilson Laney
U.S. Fish and Wildlife Service
South Atlantic Fisheries Coordination Office

Social/Economic Work Group

Ron Schmied
National Marine Fisheries Service
Southeast Regional Office

Mike Street
North Carolina Division of Marine Fisheries

Steven Atran
Gulf of Mexico Fishery Management Council

Jack Dunnigan
Atlantic States Marine Fisheries Commission

Ann Seiler
U.S. Virgin Islands Division of Fish and Wildlife

Biological/Environmental Work Group

Paul Phalen
North Carolina Division of Marine Fisheries

Albert Jones
National Marine Fisheries Service
Southeast Fisheries Science Center

Wayne Waltz
South Carolina Wildlife and Marine Resources
Department

Steve Meyers
U.S. Virgin Islands Division of Fish and Wildlife

Ron Salz
National Marine Fisheries Service
Silver Spring

Tom Van Devender
Mississippi Bureau of Marine Resources

Thomas Schmidt
National Park Service
South Florida Research Center

Lisa Kline
Atlantic States Marine Fisheries Commission

Data Base Work Group

Paul Phalen
North Carolina Division of Marine Fisheries

Gerard Bruger
Florida Marine Research Institute

Ken Savastano
National Marine Fisheries Service
Stennis Space Center

John Witzig
National Marine Fisheries Service
Silver Spring

Sylvia Cabrera
U.S. Fish and Wildlife Service
Division of Federal Aid

TABLE 3.

PROPOSED ACTIVITIES FOR RecFIN(SE) 1993 - 1995
[RecFIN(SE) Goals and Objectives are in Appendix D]

	<u>1993</u>	<u>1994</u>	<u>1995</u>
Goal 1:			
Objective 1	X		
Objective 2	X		
Objective 3	X	X	X*
Objective 4	X	X	X
Objective 5		X	X
Goal 2:			
Objective 1	X		
Objective 2	X	X	
Objective 3	X	X	X
Objective 4	X	X	X
Objective 5		X	X
Objective 6		X	X
Goal 3:			
Objective 1	X		
Objective 2	X	X	
Objective 3		X	
Objective 4	X	X	X
Objective 5	X	X	
Objective 6		X	X
Goal 4:			
Objective 1	X	X	X
Objective 2	X	X	X
Objective 3	X	X	X

* If program continues.

APPENDIX A.

RECFIN COMMITTEE MINUTES

January 12 and 13, 1993

Charleston, South Carolina

The meeting was called to order at 8:35 a.m. The following people were present:

Steve Atran, GMFMC, Tampa, FL
Jane DiCosimo, SAFMC, Charleston, SC
David Donaldson, GSMFC, Ocean Springs, MS
Jack Dunnigan, ASMFC, Washington, D.C.
Carole Goodyear, NMFS, Miami, FL
Lee Green, TPWD, Rockport, TX
Albert Jones, NMFS, Miami, FL
Wilson Laney, USFWS, Raleigh, NC
Henry Lazauski, ADCNR, Gulf Shores, AL
Ron Lukens, GSMFC, Ocean Springs, MS
Steve Meyers, CFMC, Hato Rey, PR
Joe O'hop, FDNR, St. Petersburg, FL
Maury Osborn, NMFS, Washington, D.C.
Walter Padilla, PRDNR, Mayaguez, PR
Ron Schmied, NMFS, St. Petersburg, FL
Joe Shepard, LDWF, Baton Rouge, LA
Tom Siewicki, NMFS, Charleston, SC
Mike Street, NCDMF, Morehead City, NC
Tom Van Devender, BMR, Biloxi, MS
Wayne Waltz, SCWMD, Charleston, SC

Opening Remarks

A. Jones provided some background information concerning RecFIN. He stated that interest in recreational fishing has increased over the years. And due to that interest, there was a desire to establish a more formalized organization to examine recreational fishing. He stated the plan development team (PDT) was formed to establish such an organization. He reported that the PDT met to develop a Memorandum of Understanding (MOU) which is being signed and begin devising a strategic plan. The MOU established the RecFIN committee which is charged with developing and implementing a state/federal program for recreational fisheries data collection and management. A general discussion ensued regarding expectations for RecFIN.

Selection of Chairman

* J. Shepard nominated Henry Lazauski for chairman. The Committee elected Henry Lazauski by consensus. There was a suggestion that there be two vice-chairman to insure that all geographic regions were represented. After some discussion, it was decided there would be one vice-chairman and M. Street nominated Walter Padilla for vice-chairman. The Committee elected W. Padilla by consensus. There was a short discussion concerning who would record the minutes. The Gulf States Marine Fisheries Commission (GSMFC) indicated that they would like to perform the coordination function for the RecFIN(SE) Committee and that preparing minutes and housing the administrative records would be one of the tasks involved. The committee agreed.

Adoption of Agenda

The agenda was approved with the following additions and changes:

- * add 1993 MRFSS contract status to status report on RecFIN Pacific and move the entire item after Adoption of Agenda.
- * make the development of committee standard operating procedures and rules the first issue under Suggested Business Items.
- * schedule Issues Involved in Collecting Fish Consumption Data for the first presentation on January 13, 1993.

Status Report on RecFIN (Pacific) and 1993 MRFSS Contracts

M. Osborn reported that the budget for recreational fisheries data collection was \$1.2 million short. Because of this, sampling on the Pacific coast will be reduced and sampling in the Southeast and Northeast will remain the same for the 1993-1995 MRFSS contract.

She stated California and Oregon have begun sampling and Washington is scheduled to begin sampling in March 1993. She reported that due to the cut, the Northwest has had to reprioritize their activities. She stated that work continues on data base development and administration in the Southeast.

She reported that NMFS is waiting for the 1993 MRFSS contract. It should be received by the end of January. She stated that due to the shortfall, NMFS will provide all equipment (fish keys, scales, etc.) because they can get a cheaper rate, and NMFS will drop the option for flexibility and all extraneous questions which are not essential to determining catch and effort figures. She also stated that MRFSS will not be expanding into the Caribbean and that it is not one of the options in the 1993-1995 contract.

She stated the MRFSS data base from 1988-1992 is undergoing an extensive cleanup where all the data is being converted into the same format so the data base will be standardized. She noted that a decision support system (DDS) is being developed. The DDS is a PC-based program which is menu driven. The program will enable a user to select species, area, etc. and provide the information concerning the selected topics.

She reported there is now a bulletin board (BBS) for fisheries statistics which provides information concerning MRFSS information which can be downloaded and that it might be useful to send information to the RecFIN Committee. She stated the travel budget for the program has been reduced and they have sufficient staff to operate the MRFSS program.

Development of Committee Standard Operating Procedures and Rules

- * H. Lazauski suggested that the committee use modified Robert's Rules of Order. After some discussion, the committee standards established were as follows:
 - One vote for every signatory agency which establishes 18 potential votes.
 - A quorum is a majority plus one (10 voting members).
 - Voting decisions are determined by a simple majority of those voting members present.
 - All questions concerning Robert's Rules of Order are referred to the Vice-Chairman.
 - Chairman can vote.
 - In the event of a tie, the committee will recess, reconvene and vote on the issue again. If there is still a tie after the second vote, the motion fails.

The committee moved to use modified Robert's Rules of Order and accept the standards. The motion was passed without objection.

Finalization of Strategic Plan

* C. Goodyear asked the committee to send in any information concerning their agency's survey activities which they want to be included in the appendices. The issue of who will publish the Strategic Plan was discussed. R. Lukens stated that the GSMFC would consider publishing the document but he had to look into funding possibilities. M. Street suggested that maybe both GSMFC and ASMFC could pool their resources to publish the plan. M. Osborn also noted that NMFS could possibly assist in the publication of the plan. After some discussion, H. Lazauski established an ad hoc committee consisting of Maury Osborn, Jack Dunnigan and Ron Lukens to examine the costs of publishing the Strategic Plan and determine which agency(s) could produce the document.

The committee conducted a thorough, page-by-page edit of the draft strategic plan. All of the changes consisted of editorial comments and no substantive changes were made to the document. The revised document itself will represent the administrative record for this portion of the meeting.

The meeting recessed at 6:30 p.m.

January 13, 1993

The meeting reconvened at 8:45 a.m.

Issues Involved in Collecting Fish Consumption Data

T. Siewicki provided some background concerning collection of fish consumption data. He stated NMFS has sponsored three previous studies: Market Facts, Inc. Consumer Panel Survey 1969-70; NPD Research, Inc. Fish Consumption Survey 1973-74; and Market Research Corporation of America National Seafood Consumption Survey 1981. He stated however, these surveys were design for fish market analysis and not for risk assessment and there are problems in using the information collected by these studies. He reported the surveys have some common characteristics, such as the studies were conducted pre-1981 and consumption and distribution of seafood has changed; they collected market data and not information on individual consumers; they relied on commercial harvest data and the harvest location is not known; and they lack species identification and individual detail.

He outlined the fish consumption data that are needed such as current consumption by recreational and subsistence fishermen; identification of the types of fishermen: preferential fish consumers and at-risk groups; and detailed characterization of consumption including identification of consumers and the species harvested, portion size of species, frequency of fishing, parts of fish that are consumed, how the fish is prepared and location where the species is harvested. He also stated there is a need for detailed characterization of the consumers. The information necessary includes ethnic background, height, weight, age, gender, residence, income or vocation, health status, fishing mode and avidity and willingness for follow-up.

He stated there seems to be an increasing interest in this area by different agencies. He reported the Environmental Protection Agency (EPA), Food and Drug Administration (FDA) and NMFS have produced documents and manuals and conducted a variety of surveys concerning fish consumption over the years.

He stated there needs to be multiple approaches to begin to understand recreational fish consumption. One of the possible approaches would be to append questions to the MRFSS. This addition to the survey would identify preferential consumers and at-risk sub-populations. The interviewers can already identify species and harvest locations and could be trained to characterize the fish and portion size. He stated an addition to the MRFSS would be a cost-effective method of collecting this important information. Throughout the presentation, a number of questions and observations were made by the Committee.

Discussion of Next Meeting and Funding Options

* The Committee discussed the location and dates of the next RecFIN meeting. R. Lukens noted GSMFC does not have a large travel budget for this year and suggested that an inexpensive location be selected. In an effort to reduce travel costs, it was suggested that the meeting be held on a Friday and Saturday. M. Street noted that at the RecFIN meeting in New Orleans, it was determined that the cost of travel for the committee would be approximately \$25,000 and NMFS offered to cover some travel costs. A. Jones stated that NMFS could provide funding for members from North Carolina, Puerto Rico, Virgin Islands and the Caribbean Fishery Management Council for the next meeting. After some discussion, it was agreed the next RecFIN meeting would be held on March 26 and 27, 1993. Possible locations for the meeting were New Orleans, Atlanta, Miami and Charlotte and R. Lukens offered to conduct a travel cost analysis for each site to determine a meeting location.

H. Lazauski asked the Committee for possible agenda items for the next meeting. Some of the issues to be discussed are finalization of the Strategic and Annual Operations Plans, charges to the work groups, discussion of funding options, and future meeting schedules for the RecFIN committee, subcommittees and work groups.

The committee then explored possible funding sources. The MARFIN program and the Living Aquatic Resources Subcommittee of the EPA's Gulf of Mexico Program were mentioned as potential sources. It was stated these sources could be used to fund special surveys or projects but could not be used as long-term survey money. Another possible source was W/B administrative monies. The committee agreed that this issue would be a standing topic at all future meetings.

Development of a Draft Operations Plan

H. Lazauski distributed a plan developed by J. Shepard which outlined the goals and objectives to be completed for 1993-1995 and a RecFIN(SE) task work plan developed by A. Jones. The Committee reviewed the outline and task plan and the final documents are attached. H. Lazauski suggested some objectives be grouped and addressed by subcommittees and work groups. The committee decided the objectives to be accomplished in the first year and the task work plan for each objective would be used as the basis for development of the draft operations plan.

The committee established several work groups and subcommittees:

Administrative Subcommittee

Jack Dunnigan
Ron Lukens
Henry Lazauski
Walter Padilla
Maury Osborn
Albert Jones
Wilson Laney

Social/Economic Work Group

Ron Schmied
Mike Street
Steve Atran
Jack Dunnigan
Anne Seiler
Mike Orbach

Biological/Environmental Work Group

Paul Phalen
Albert Jones
Wayne Waltz
Anne Seiler
Maury Osborn
Tom Van Devender

Data Base Work Group

Paul Phalen
Ken Savastano
Sylvia Cabrera
Ken Haddad
NMFS-Headquarters designee

For goal one, objectives one through four have been identified as first-year tasks. Objective one and two have already been accomplished by the RecFIN committee. Objective three is currently being developed by the

RecFIN committee and objective four will be accomplished in part by GSMFC through coordination of mailing list and information dissemination through newsletters of cooperating agencies involved in RecFIN.

For goal two, objectives one through four have been identified as first-year tasks.

RecFIN Goal/Objective: Goal 2, Objective 1
Task Title: Recreational Fishing Components and Data Priorities
Objective: Identify the components of the fishery and required data priorities for each component.
Team Members: Biological/Environmental Work Group
Approach: Through existing material and personal observations, identify all components of the marine recreational fishing universe by state/territory and quantify the units within component. Identify data categories fishery management agencies need to reach and evaluate decisions.
Accomplished by: 1) conference calls; 2) mail; and 3) workshops, if necessary.
Resources: Travel costs/meeting costs; conference call costs; report costs; and inkind (time) and staff time.
Product: Report.
Schedule: Conference call on February 16; report completed by mid/late August; and work group meeting in conjunction with March RecFIN meeting.

RecFIN Goal/Objective: Goal 2, Objective 2
Task Title: Biological/Environmental Data Elements
Objective: Identify biological and environmental data elements required for each fishery component.
Team Members: Biological/Environmental Work Group
Approach: Use GSMFC Data Report and evaluate/modify as necessary for South Atlantic and Caribbean needs. This will be done for each fishery component by sub-region (matrix).
Accomplished by: 1) conference call; 2) mail; and 3) workshops, if necessary.
Resources: Travel costs/meeting costs; conference call costs; report costs; and inkind (time) and staff time.
Product: Report.
Schedule: Conference call on February 16; report completed by mid/late August; and work group meeting in conjunction with March RecFIN meeting.

RecFIN Goal/Objective: Goal 2, Objective 3
Task Title: Biological/Environmental Quality Assurance and Quality Control
Objective: Identify and determine standards for biological and environmental data collection, including statistical, training, and quality assurance and quality control standards.
Team Members: Biological/Environmental Work Group
Approach: Review existing quality assurance and quality control documents and modify as necessary for application to RecFIN.
Accomplished by: 1) conference call; 2) mail; and 3) workshops, if necessary.
Resources: Travel costs/meeting costs; conference call costs; report costs; and inkind (time) and staff time.
Product: Report.
Schedule: Conference call on February 16; report completed by mid/late August; and work group meeting in conjunction with March RecFIN meeting.

RecFIN Goal/Objective: Goal 2, Objective 2
Task Title: Social and Economic Data Elements
Objective: Identify sociological and economic data elements required for each fishery component.
Team Members: Social/Economic Work Group
Approach: Determine how sociological and economic data should be used in fisheries management.

Then determine which data elements are necessary for evaluation and decision-making by fishery managers.

Accomplished by holding a workshop with invited experts to determine necessary data elements.

Resources: Workshop costs; Travel costs; conference call costs; report costs; and inkind (time) and staff time.
Product: Report.
Schedule: Work group meeting in conjunction with March RecFIN meeting.

RecFIN Goal/Objective: Goal 2, Objective 3

Task Title: Social/Economic Quality Assurance and Quality Control

Objective: Identify and determine standards for sociological and economic data collection, including statistical, training, and quality assurance and quality control standards.

Team Members: Social/Economic Work Group

Approach: Determine standards for collection and management of social and economic data. Accomplished by workshops.

Resources: Workshop costs; Travel costs; conference call costs; report costs; and inkind (time) and staff time.

Product: Report.

Schedule: Work group meeting in conjunction with March RecFIN meeting.

RecFIN Goal/Objective: Goal 2, Objective 4

Title: Evaluation of current programs regarding objectives one, two and three.

Objective: Identify and evaluate the adequacy of current programs for meeting RecFIN(SE) requirements.

Team Members: RecFIN(SE) Committee

Approach: Evaluate reports from Biological/Environmental and Social/Economic Work Groups in relation to existing programs.

Resources: Travel costs/meeting costs; report costs; and inkind (time) and staff time.

Product: Report.

Schedule: RecFIN meeting at the end of 1993.

There being no further business, the meeting was adjourned at 4:30 p.m.

	1993	1994	1995
Goal 1:			
Objective 1	X		
Objective 2	X		
Objective 3	X	X	X*
Objective 4	X	X	X
Objective 5			X
Goal 2:			
Objective 1	X		
Objective 2	X		
Objective 3	X		
Objective 4	X	X	
Objective 5		X	X
Objective 6		X	X
Goal 3:			
Objective 1	X		
Objective 2	X	X	
Objective 3		X	
Objective 4	X	X	X
Objective 5	X	X	
Objective 6		X	X
Goal 4:			
Objective 1	X	X	X
Objective 2	X	X	X
Objective 3	X	X	X

* If program continues

RECFIN(SE) TASK WORK PLAN

RecFIN Goal/Objective:

Task Title:

Task Objective:

Task Team Members:

Task Approach:

Resource Requirements:

Expected Product:

Task Schedule:

RECFIN COMMITTEE MINUTES

March 26 - 27, 1993

New Orleans, Louisiana

Chairman Henry Lazauski call the meeting to order at 8:35 a.m. The following members and others were present:

Members

Jane DiCosimo, SAFMC, Charleston, SC
Doug Frugé, USFWS, Ocean Springs, MS
Lee Green, TPWD, Rockport, TX
Albert Jones, NMFS, Miami, FL
Henry Lazauski, ADCNR, Gulf Shores, AL
Ron Lukens, GSMFC, Ocean Springs, MS
Joe O'Hop, FMRI, St. Petersburg, FL
Maury Osborn, NMFS, Washington, D.C.
Walter Padilla, PRDNR, Mayaguez, PR
Paul Perra, ASMFC, Washington, D.C.
Tom Schmidt, USNPS, Homestead, FL
Ron Schmied, NMFS, St. Petersburg, FL
Ann Seiler, DFW/USVI, St. Thomas, VI
Joe Shepard, LDWF, Baton Rouge, LA
Mike Street, NCDMF, Morehead City, NC
Tom Van Devender, BMR, Biloxi, MS
Wayne Waltz, SCWMRD, Charleston, SC

Others

David Donaldson, GSMFC, Ocean Springs, MS
Lisa Kline, ASMFC, Washington, D.C.

Adoption of Agenda

The agenda was approved with the following changes:

- * Moving item #5 Development of Operations Plan after the work group leaders presented their reports.

Approval of Minutes

* The minutes from the meeting held on January 12 - 13, 1993 in Charleston, South Carolina were approved with minor editorial changes. There was some discussion concerning holding meetings over the weekends. R. Lukens noted that holding meetings on Saturday and Sunday does not save very much money and in some instances costs more due to airfare and hotel rates. He also stated that it is difficult to get inexpensive hotel rates on the weekends. Thus, M. Osborn moved that there be no meetings on Saturday or Sunday for the RecFIN(SE). The motion passed unanimously.

Finalization of Strategic Plan

R. Lukens suggested that appendix D of the Strategic Plan be removed and make it into a separate document. Appendix D does not contain information that is essential to the plan and it also increases the size of the plan. M. Street stated that the removal of appendix D is a good idea and noted that it could be something that the Committee might want to update periodically. M. Osburn moved that to remove Appendix D from the Strategic Plan and make the appendix a separate document. R. Lukens offered to publish and produce 100 copies of the new

document. The motion passed unanimously. The Committee discussed some editorial changes to the Strategic Plan. H. Lazauski asked the Committee if they believed the executive summary was comprehensive enough to understand what the Strategic Plan and RecFIN(SE) entails. The Committee agreed that the executive summary needed to be modified and S. Lazauski, R. Lukens and M. Street were charged with producing a new executive summary. R. Lukens moved that Strategic Plan be accepted for publication. There will be 300 copies produced and numbering series specific for the RecFIN(SE) will be used. It was noted that the information in appendix C was contained in appendix B. The motion was modified to delete appendix C if it was duplicative. The motion passed unanimously.

The Committee discussed who would publish the Strategic Plan. R. Lukens stated the GSMFC would publish the document. He reviewed the costs of publishing the document for various agencies:

GSMFC \$900
ASMFC \$700
NMFS \$630

However, there were some budgetary problems with the ASMFC and NMFS, thus R. Lukens recommended that GSMFC publish the Plan. P. Perra offered to split the costs of publishing the document with the GSMFC and both commissions would be referenced in the document.

Discussion of Funding

R. Lukens stated GSMFC has received assurances that funding from the Sport Fish Restoration Program will be available through 1994 and continue to use these funds to support some RecFIN(SE) activities. R. Lukens submitted a proposal to the EPA's Gulf of Mexico Program for funding of RecFIN(SE) activities. R. Lukens does not have much hope that the proposal will be funded. The selection of proposals will be in May. If this project is selected, a full proposal would be needed and R. Lukens will keep the Committee apprised of the situation. P. Perra noted that NMFS cut 10% from the IJF budget. However, Congress only authorized a 5% cut which means the states may be receiving some additional monies. If the money is received too late in the year to be used by the state, they can authorize that money be sent to the commissions instead of being reverted back to NMFS. If this happens the commissions can use this money to assist funding RecFIN(SE) activities. H. Lazauski stated another possible funding source is MARFIN. MARFIN could fund specific issues which could be addressed by work groups. The Committee identified several possible sources for funding:

- * W/B administrative funds
- * EPA Gulf of Mexico Program
- * MARFIN
- * S/K
- * IJF

R. Lukens offered to develop a full administrative cooperative proposal for funding of RecFIN(SE) Committee and various units such as geographic subcommittees, work groups, etc. and submit it both the region and headquarters of the NMFS. The GSMFC will work with the ASMFC on this issue. A. Jones noted that a good record of inkind contributions should be maintained. The Committee decided that inkind contributions should be reported on a quarterly basis and the information be sent to GSMFC. GSMFC will maintain a data base and this information can be used to demonstrate the level of participation of the agencies involved with RecFIN(SE). Also, it might be useful to compile inkind information for 1992 for those agencies involved with RecFIN(SE) and send that to the GSMFC.

The meeting recessed at 5:00 p.m.

March 27, 1993

The meeting reconvened at 8:40 a.m. There was a lengthy discussion concerning the modified executive summary of the Strategic Plan. The Committee thoroughly edited the modified summary. P. Perra suggested that executive summary created during the discussion be reviewed by the RecFIN(SE) Committee and they will contact the commission within three days with any editorial comments concerning the summary. It was stressed that this activity must be completed quickly so the Strategic Plan can be published in the near future.

Work Group Reports

a. Biological/Environmental

M. Osburn presented a conceptual model of the recreational fishery which defined the scope of the universe and include all possible components. The top of the model is the entire recreational fishery and all participants in the fishery. The components were defined first by fishing mode or platform: private/rental boats, for-hire boats - headboats and charter/guide boats, and shore fishing, including both beach/bank and man-made shore areas. Fishing activity was then categorized as to whether it was organized -- tournaments, derbies, dive-club competitions, etc. -- or as unorganized fishing. Use of various gears can be categorized beneath each of these sub-groups, and finally finfish and shellfish species or species groups targeted and caught are the last level of categorization. The gear boxes are annotated to include types of gear important in both localized areas such as skin/scuba spear fishing in the Caribbean and shrimp trawls in the Gulf and South Atlantic so it is clear that all recreational fishing activities are included.

The conceptual model was used to develop an inventory form to define and quantify the magnitude of actual fisheries in all states, territories, and smaller geographical areas. This inventory can be used to group common fisheries and identify unique fisheries in the Southeast Region, to develop priorities for data collection, and identify the best survey strategies for each fishery. The inventory forms will be given to each RecFIN(SE) member to complete for their geographic area. General guidelines are outlined for completing the inventory forms:

- 1) Use the best available source to quantify the number of boats, participants, and access points.
- 2) Attach a sheet documenting what sources were used, applicable time periods, and assumptions used.
- 3) Public access points are defined as open to the public, whether a fee is required or not; private access points are those limited to members of private clubs, locked marinas, etc.
- 4) Guide boats and charter boats have separate columns on the inventory form since the work group felt these components can be fleshed out for specific areas and fisheries. Assignments were given to individuals to develop some preliminary brief written characterizations of some of these fisheries in specific areas. Assignments are Wayne Waltz for the South Atlantic, Ann Seiler for the Caribbean, Tom Schmidt for the national parks, and Tom Van Devender for the Gulf of Mexico and are due April 29, 1993 to the GSMFC.

This information will be compiled and distribute it for consideration at the next meeting or conference call. Lumping and splitting of all fisheries will be the final step in this process of describing components of the recreational fishery in the Southeast Region.

The data elements table in the for-hire workshop proceedings was adapted to apply to the overall recreational fishery. All data elements that pertain to collection and use of biological data were identified from all of the major categories listed on the table, new items were added, and the priority column will be removed from this table. The table will be revised, develop narrative to explain the rationale for individual elements where needed, and distribute the revised table.

At the next meeting or conference call, the work group will develop a series of tables for each specific fishery. Each table will list data elements important to that specific fishery, how the data are important to that fishery -- stock assessment, survey design and operation, and development and/or evaluation of management regulations. Data elements will be ranked by priority within each category of use and feasibility of collection of each item will be addressed. These tables could be expanded upon by the Socio-Economic Work Group with coordination by the work group leaders.

A basic document incorporating standards developed by states, the GSMFC DMS, and the MRFSS program has already been compiled. Work group members are to critically review this document for review and completion during the next meeting or conference call. The work group also discussed the need to develop common definitions for catch, harvest, landings and other recreational fisheries terms. Figure 1 and Table 2 in the For-hire workshop proceedings can be used as starting point and some revisions were suggested. If the RecFIN(SE) Committee agrees

this is desirable, it should probably be tasked to both work groups. The Biological/Environmental Work Group should be able to finish most of our tasks under the three objectives through conference calls and/or a meeting and produce reports before the final 1993 RecFIN Committee meeting in September. Many of the members are expected to attend the Cooperative Statistics Annual meeting in July, and the work group could piggyback onto this meeting.

b. Social/Economic

R. Schmied reported that the discussion of the work group revolved around the need for economic impact assessments (EIAs) and social impact assessments (SIAs). The work group believed it would be useful to develop a document which explains why fishery managers are at the point of having to develop EIAs and SIAs, the differences between EIAs and SIAs and attempt to define the types of data that are needed to conduct these assessments. The work group report distributed to the Committee is the first draft of this document. R. Schmied stated SIAs seek to estimate the impact of management actions on the quality of peoples lives. They attempt to determine who will be affected and how they will be affected. They also measure changes in the social fabric and stability of a fishery and associated fishing communities.

Because the area of EIAs and SIAs is fairly new, the work group proposes to formulate its recommendations regarding the collection and use of social and economic data by convening an expert panel of economists and social scientists and seeking their guidance on:

- 1) Appropriate EIA and SIA methods
- 2) Social and economic data needed to conduct these assessments
- 3) The current availability of such data
- 4) Appropriate methods to collect needed data.

The work group will develop a more specific proposal of who will be invited to this workshop, an estimate of funds required to complete this task and pursue potential funding sources. R. Schmied asked the Committee for comments and the Committee spent some time providing input concerning the document. The draft social and economic data elements document is attached.

Time Schedule for Next Meeting

The Committee suggested that a meeting in mid-September would allow for the group to accomplish some of tasks. It was noted that the Biological/Environmental Work Group will meet in conjunction with the Cooperative Statistics Program meeting in mid-July. The Committee decided the next RecFIN(SE) Committee meeting will be in September 16 - 17, 1993. The tentative schedule will be from 8:00 a.m. - 5:00 p.m. on September 16, 1993 and 8:00 a.m. - 12 noon on September 17, 1993. The meeting will be held in Jacksonville, Florida and P. Perra and J. DiCosimo will send some information concerning hotels in the Jacksonville area.

W. Padilla noted that the committee needed to establish a time table for the Data Base Work Group. The Committee discussed the task related to the work group pertinent to the goals and objectives. It was decided that the work group should convene a conference call to elect a work group leader, begin compiling an inventory of software and hardware of the RecFIN(SE) participants, discuss the SEAMAP questionnaire used to develop their data management system and modify for application to RecFIN(SE). The Committee requested that the inventory of software and hardware will be completed and presented at the September RecFIN(SE) meeting.

Development of Operations Plan

A draft copy of the 1993 Operations Plan was distributed to the Committee and group edited the document. To assist the Committee, copies of the SEAMAP and PacFIN Operations Plans were distributed. There was a discussion concerning the sections to be included in an operations plan. The tasks should be placed into a worksheet format and identify when the products for a specific task will be completed. The revised 1993 Operations Plan is attached.

H. Lazauski stated that this document is for 1993 and needs be revised and finalized quickly. D. Donaldson stated he will send out the revised document to the RecFIN(SE) members by April 7, 1993 and the members should provide comments back to the GSMFC no later than April 21, 1993.

Other Business

M. Osburn stated the Biological/Environmental Work Group suggested that they develop definitions for marine recreational data. This task would be accomplished by the Biological/Environmental and the Social/Economic Work Groups. She asked if this activity should be included in the operations plan as a separate task. The Committee stated that although the activity was not specifically named, it was implied that the work groups would continue working on this task. R. Lukens asked if there were existing glossaries which could be distributed to the work groups to assist in this activity.

There being no further business, the meeting was adjourned at 2:20 pm.

RECFIN(SE) COMMITTEE MINUTES
September 16-17, 1993
Jacksonville, Florida

Chairman Henry Lazauski call the meeting to order at 8:30 a.m. The following people were present:

Page Campbell, TPWD, Rockport, TX
David Donaldson, GSMFC, Ocean Springs, MS
Jack Dunnigan, ASMFC, Washington, D.C.
Graceila Garcia-Moliner, CFMC, San Juan, PR
Scott Gordon, BMR, Biloxi, MS
Albert Jones, NMFS, Miami, FL
Lisa Kline, ASMFC, Washington, D.C.
Wilson Laney, USFWS, Raleigh, NC
Henry Lazauski, ADCNR, Gulf Shores, AL
Ron Lukens, GSMFC, Ocean Springs, MS
Joe Moran, SCWMRD, Charleston, SC
Nick Nicholson, GDNR, Brunswick, GA
Joe O'Hop, FMRI, St. Petersburg, FL
Maury Osborn, NMFS, Washington, D.C.
Walter Padilla, PRDNR, Mayaguez, PR
John Pafford, GDNR, Brunswick, GA
Tom Schmidt, USNPS, Homestead, FL
Ron Schmied, NMFS, St. Petersburg, FL
Ann Seiler, DFW/USVI, St. Thomas, VI
Joe Shepard, LDWF, Baton Rouge, LA
Mike Street, NCDMF, Morehead City, NC

Adoption of Agenda

The agenda was approved with the following changes:

- * Moving Discussion of Adequacy of Current MRF Programs for RecFIN (Goal 2 Objective 4) after Operations Plan.
- * Moving Work Group Reports after Discussion of 1995 Program Review.
- * Added discussion of new issues of the MRFSS under Other Business.

Approval of Minutes

- * The minutes from the meeting held on March 26-27, 1993 in New Orleans, Louisiana were approved as written.

Discussion of Administrative Proposal

R. Lukens presented a proposal which supports the administrative activities of the RecFIN(SE) and ComFIN. It was designed for submission to MARFIN. It was noted that John Brown of the USFWS is interested in getting funding for RecFIN but it will not be a long-term commitment. R. Lukens asked the committee to review the proposal and asked the committee for some input. If the committee accepts this proposal, the staff will submit it to MARFIN and also send a copy to John Brown. The committee asked for clarification of several points concerning to the proposal and offered several editorial comments. A. Seiler moved to approve the proposal. J. Dunnigan suggested that the work summary be modified to provide more information on exactly will be accomplished by the RecFIN(SE). The committee suggested that the proposal needs some more detail and expansion of the ideas. A. Jones stated that it may be difficult to defend the activities outlined in this proposal against the

actual collection of data. The proposal needs to address the benefits of the coordination activities, accomplishment of work tasks and the future potential of RecFIN(SE) opposed to the alternative of primary data collection. H. Lazauski asked the committee what would happen if there was no dedicated funding for RecFIN(SE). R. Lukens stated that the Gulf of Mexico would be able to continue funding travel for the Gulf participants. A. Seiler stated the Caribbean would probably manage and continue getting support through the USFWS and NMFS. J. Dunnigan stated that South Atlantic would be able to provide continued staff support but ASMFC does not have money to support travel costs for members on the committee and work groups. A. Jones stated that NMFS could probably continue to support some Caribbean and South Atlantic travel. M. Osborn stated that each participants needs to determine how important RecFIN is to them. If RecFIN is low on the priority list, then the participant may need to rethink their involvement in the program. R. Lukens believes that it is not a matter of being uncommitted but that RecFIN is a new initiative which has not been programmed into the budget and there is simply not enough money. R. Lukens stated that the commercial portion of the proposal could be dropped if the committee believes it would be difficult to justify the proposed level of funding. The committee believed having recreational and commercial activities in one proposal was a good idea and both should be included. M. Osborn amended the motion to approve the proposal in concept with further development by staff. The motion, as amended, passed unanimously.

Discussion of State/Federal Planning Initiatives

M. Osborn reported that NMFS is in the process of developing a fisheries statistics strategic plan. This plan will chart a course for the fisheries statistics program of the NMFS. There are three key points to this process: the challenges that are faced; what can be accomplished and the process to be used to achieve success. Currently, there are information gaps and data inconsistencies, overlap, duplication and there are a lot of problems in the fisheries arena in which data are needed. There are changes in resource management such as NMFS IT95 computing system, ITQ's, ecosystem management, etc. which managers need to be prepared to handle. There is a need to link this strategic planning with the budget and operating plans. There are a lot of competing interests and there is a need to prioritize these interest. Instead of across the board cuts, there needs to be strategic cuts or strategic increases with increased funding made based on this priority list. NMFS wants to establish a framework for future planning by assessing current and future data needs, setting goals to evaluate/improve information quality, and develop short/long term budget. NMFS wants to advance uniform, agency-wide standards for collection and management of fishery statistics as well as improve data accessibility and reduce program duplication. The planning process uses both a bottom-up and top-down approach and uses the science of strategic planning. It asks four critical questions: 1) what ought to be done; 2) how can it be done; 3) when will it be done; and 4) who will be responsible for doing it. The process is more important than the plan itself. There will be involvement by states, councils, commissions, etc. This is different from past planning efforts in that there is a commitment from senior management and it is agency-wide; there is involvement of a professional facilitator; it involves thinking more about long range future rather than short range goals; it will include more involvement by NMFS constituents; and it will be used to drive some funding initiatives. The process will be facilitated by three teams. The red team is comprised of NMFS senior management. Their objective is to set strategic goals. The blue team consists of mid-level management, and their task is to determine how to implement these goals. And the green team is comprised of technical level personnel who will establish when and who will implement the goals. The RecFIN(SE) Committee expressed an interest in being involved with this planning effort. Several members stated that it is important for the constituents to be involved in this process since they are integrally involved in the programs which will be affected.

Discussion of 1995 Program Review

R. Lukens stated that as part of the goals and objectives, there is a task of evaluating the program which will be complete by the end of the three-year pilot period (December 31, 1995). The reason for addressing it now is that funding for this activity needs to be obtained and the committee needs to decide how it wants to handle this task. The Committee needs to decide what type of review to conduct. One option is to contract with consultants to conduct an outside review of the program. Another option is a comprehensive internal review with all the

participants and others conducting the review. A. Jones stated that it is important to determine what is meant by review. If the committee wants a critical evaluation of program, it is essential that the review be conducted by an outside group consisting of a panel or an individual consultant. After some discussion, the committee decided that an outside review consisting of a panel of personnel would provide the best evaluation of the program. A panel will provide a variety of perspectives. The committee addressed the issue of hiring a consultant or having others coordinate the panel review. It was obvious that the latter would be less expensive. R. Schmied stated that the best option would be to hire consultants to conduct a panel review and if there was not funding to hire the consultants, then have others coordinate the review. The committee suggested that groups such as National Fish and Wildlife Foundation, American Fisheries Society and possibly the USFWS could provide some expertise for the planning and participating in the panel review. H. Lazauski charged the Administrative Subcommittee to prepare an outline for conducting the program review in 1995 and present its findings to the committee at the next meeting.

Work Group Reports

a. Data Base

* D. Donaldson reported for work group leader John Witzig that the Data Base Work Group met via a conference call on April 27, 1993. The first order of business was to elect a work group leader. John Witzig was unanimously elected. Next, there was a discussion concerning the goals and objectives pertaining to the Data Base Work Group. Goal 3, Objective 1 was completed and NMFS-HQ volunteered to house the RecFIN data management system. Pertaining to Goal 3, Objective 2, the group decided the survey utilized by SEAMAP to develop their data management system would be a good starting point for the RecFIN system. The Work Group reviewed the document and made the necessary changes. The modified survey will be sent to the RecFIN(SE) Committee for completion by each agency. Pertaining to Goal 3, Objective 4, several Work Group members are compiling documentation of the standard protocols pertaining to data management for major data collection programs such as SEAMAP, MRFSS and CSP. Once these protocols are collected, GSMFC will distribute this information to the work group for their review. The work group will review this material and begin formulating methods for modifying the protocols for application to RecFIN(SE). And pertaining to Goal 3, Objective 5, the Work Group believed that they should not be the only work group to prioritize the projects. They believed the Biological/Environmental and Social/Economic Work Groups should also be involved in the process. It was noted that the document *Marine Recreational Fisheries Data Collection Project Summaries* contains most of the MRF data collection projects in the Southeast Region. It was suggested that the projects be summarized into a table format and that all three work groups rank the projects for inclusion into the RecFIN data management system specific to their area of expertise. The project summaries table and the *Marine Recreational Fisheries Data Collection Project Summaries* have been sent to the three groups. The Biological/Environmental Work Group has ranked the projects, and the Social/Economic and Data Base Work Groups have scheduled conference calls to do the same. M. Osborn noted that NMFS will move the MRFSS data base onto ORACLE with the IT95 system and through a ESDIM proposal, will hire a computer programmer to develop a system to accomplish this task. The programmer will develop an user-friendly menu system which would allow users to do some basic computations. The committee moved to approve the report which is attached. The motion was seconded and passed unanimously.

b. Social/Economic

* R. Schmied reported that the Social/Economic Work Group has not met since the last RecFIN(SE) meeting. The primary task is to convene a workshop and the group has been working on securing funding for this workshop. Unfortunately, there is no money available to support a workshop, however, there has been some activity in this area. NMFS Northeast Fisheries Science Center, Wood Hole Lab conducted a Northeast Data Needs Workshop in March 1993 which resulted in an extensive report identifying economic and sociological needs. He distributed this report and stated that this report was very comprehensive with regards to economic data needs but was lacking with respect to sociological data needs relative to recreational fishing. NMFS Headquarters has initiated the development of a National Fisheries Statistics Strategic Plan (NFSSP) which will include strategic, management and operational planning phases. These will be accomplished through facilitated workshops using the Interactive

Management planning methodology and supported by Expert Choice software. Workshops are scheduled to occur during October-December, 1993. Strategic Plan approval is expected by May 1994. Current plans are to use the findings generated by the Northeast Data Needs Workshop as a starting point for addressing socio-economic needs in the NFSSP effort. R. Schmied requested that if NMFS-HQ is going to use these reports developed from the workshop, there should be a section pertaining to sociological data needs relative to recreational fishing. J. Dunnigan noted that the recreational social issues in the northeast region are different than those in the southeast and the group may want to explore different methods of getting this information. M. Street mentioned that Mike Orbach is interested in participating on the Social/Economic Work Group but he would not be able participate in the near future. M. Orbach is now teaching at Duke University and is involved in a program which could provide possible sources (both personnel and funds) for conducting some social and economic work. M. Osborn mentioned that Texas has conducted extensive sociological surveys regarding the recreational fishermen in Texas and the for-hire workshop document and results from these surveys will be useful in developing sociological data needs. The recommendation from Social/Economic Work Group is that given the current lack of funding for a RecFIN(SE) socio-economic data needs workshop and the parallel effort that will occur as part of the NFSSP process, the RecFIN(SE) Committee should allow R. Schmied to determine the plans for filling the void of socio-cultural data needs in respect to recreational fishing, and what opportunities are available for the Work Group to be involved in this process and explore opportunities for participation in the national effort and use findings resulting from this process, as appropriate. The committee moved to approve these recommendations and approved the report which is attached. The motion was seconded and passed unanimously.

c. Biological/Environmental

* M. Osborn stated there were three tasks assigned to the work group which referred to Goal 2, Objective 1, 2 and 3. The first task under Goal 2, Objective 1 was to identify components of the fishery and required data priorities of each component. Each component has been identified as well as the magnitude of the components. The first step was to develop a set of definitions pertaining to recreational fishing and a figure which outlines the recreational fishery. After some discussion, the definitions and figure were modified by the committee, and the amended definitions and figure are included in the report. R. Lukens presented a memorandum which provides guidance on definitions on marine recreational fishing and fishermen. The committee asked the staff to distribute the memo to the group. The committee believed that the RecFIN(SE) needs to decide on which term should be used to describe people who participate in fishing: "fishers" or "fishermen". After some discussion, A. Seiler moved the RecFIN(SE) use the term "fisherman" to describe someone who fishes. The motion was seconded and passed with NMFS, CFMC and Puerto Rico voting against and Alabama abstaining. The next step was the development of a conceptual model of the recreational fishery which defined the scope of the universe and included all possible components. The components were defined by 1) fishing mode or platform: private/rental boats, for-hire boats -- headboats and charter/guide boats, and shore fishing, including both beach/bank and man-made shore areas; 2) fishing activity: organized -- tournaments, derbies, dive-club competitions, etc. -- or unorganized fishing; 3) gears used; and 4) species targeted. The committee reviewed the model and the amended model is included in the report.

The conceptual model was used to develop an inventory from which shows the presence or absence and relative magnitude of recreational fisheries in all states, territories, and smaller geographical areas. This inventory can be used to group common fisheries and identify unique fisheries in the Southeast Region, to develop priorities for data collection, and identify the best survey strategies for each fishery. Under the magnitude portion of this table, M. Osborn outline the criteria used by each member when providing the information. There were: 1) Use the best available source to quantify the number of boats, participants, and access points; 2) Document what sources were used, applicable time periods, and any assumptions made; 3) Public access points were defined as "a point of departure or point of fishing location (e.g., boat ramp, dock, marina, pier, shoreline) which is accessible to a member of the general public, either at no cost or by fee". Private access points are "a point of departure or fishing location which is accessible only to members of a limited, restricted group of persons, by reason of membership or ownership"; and 4) Guide boats and charter boats have separate columns on the inventory form since the work group felt these components could be developed separately for state and territorial fisheries. The next set of tables addressed data collection activities for the each of the recreational fisheries components and provides some

idea of the amount of coverage being obtained for specific fisheries. M. Osborn asked each member to please review all the tables and contact her with any changes as soon as possible.

Under Goal 2, Objective 2, the work group identified biological and environmental data elements necessary for the management of a fishery through use in stock assessments, survey design, or formulation and evaluation of management regulations. The data elements table in the GSMFC "for-hire" workshop proceedings was adapted to apply to the entire recreational fishery in the Southeast Region. The group did not assign the various data elements to each fishery component. The need for any of the items for a specified fishery should be determined on a case-by-case basis depending on management needs. All items listed were deemed important, but all may not be collected depending on survey design and budgets. The list provides a menu to select from based on management needs and survey design. In the report, there is justification for the presence of the variables which have been included in the table.

Additional data called "metadata" were discussed. Metadata is defined as information that is necessary to interpret survey data and is more descriptive than analytical ("meta" means transcending). Such data include environmental perturbations, economic conditions, regulations (including licensing), contracting/procedural changes in conduct of surveys, and social factors. The work group recommends that a metadata base be developed for the MRFSS in the Southeast beginning with 1980. Such a file would be incorporated into the national MRF data base to be developed by the MRFSS staff in consultation with other users. In 1994, work group members will provide their thoughts on metadata criteria (types, examples, sources, spatial/temporal scope, etc.) Once criteria are established, the work group will start compiling database items.

Under Goal 2, Objective 3, a draft document incorporating standards developed by the MRFSS program, the States, and the GSMFC Data Management Subcommittee has been compiled. Work group members are in the process of a critical review and adaptation of this document. Final QA/QC standards will be presented in 1994.

* Under other business, the Work Group prioritized MRF projects for inclusion in the national data base. All projects described in the MRF Data Collection Project Summaries (Strategic Plan Appendix) were examined concerning incorporation into regional and national MRF data bases. Of 66 MRF surveys, 13 were classified as high priority, 31 as low priority, and 22 as not appropriate for incorporation. Data bases were evaluated using the following criteria: 1) contain data elements described on data elements table; 2) reasonably wide temporal/spatial scope; 3) reliability; 4) fill current data gaps; 5) do not duplicate other data bases; and 6) provide syntheses of data sets with additional information. R. Lukens suggested that the Social/Economic and Data Base Work Groups use this criteria when developing their priority lists. The committee moved to accept the amended report which is attached. The motion was seconded and passed unanimously.

Next, the committee established a time table for getting information and comments to staff and work group leaders. Each state needs to review the tables in the Biological/Environmental Work Group report and contact M. Osborn by September 30, 1993 with any comments. Then, M. Osborn will send out the revised report to the committee by the end of October. R. Schmied asked the Social/Economic Work Group and any others to review the economic and socio-cultural reports distributed at the meeting and contact him by October 31, 1993 with any comments. D. Donaldson noted that the Social/Economic and Data Base Work Groups need to complete their prioritization of MRF data collection projects. The committee decided the Social/Economic Work Group should have a conference call to address this issue, and then the Data Base Work Group will compile a final priority list from the inventories developed by the other work groups for presentation it to the RecFIN(SE) Committee.

Time Schedule for Next Meeting

* The committee discussed the schedule for the next meeting. M. Street noted that piggybacking the meetings of the RecFIN(SE) and the CSP seems to be working quite well and the committee should continue to conduct the meetings in this fashion. After some discussion about airfare and hotel costs, A. Seiler moved to hold the next meeting in San Juan, Puerto Rico during the first week February. The motion passed unanimously. R. Lukens

noted that the group should have a back-up site. J. Dunnigan moved to conduct the meeting somewhere between Mobile, Alabama and Biloxi, Mississippi, at the discretion of the staff, if it is not possible to have the meeting in Puerto Rico. The time frame of the meeting would be the same. The motion passed unanimously.

Discussion of Chairman Tenure

* The committee discussed election of officers. J. Moran noted that since this is a fairly new program, in an effort to keep some continuity, the chairman and vice chairman should be elected every two years. H. Lazauski stated that the vice chairman could be the chairman-elect and this would cut down on some discontinuity. J. Shepard stated that to keep it as flexible as possible, the chairman and vice chairman should be elected annually. After some discussion, M. Street moved that the term of chairman and vice chairman will be two years with the potential for reelection. The term would be for the calendar year (January - December). The motion was seconded and passed unanimously.

Other Business

R. Lukens presented a MARFIN proposal from Chris Dyer, a professor from the University of South Alabama, that focused on the need for compilation of a data base on social, cultural, and economic aspects of the fisheries in the Gulf of Mexico. The reason for presenting the proposal is not to endorse the project but to provide feedback in the usefulness of the project. The committee was concerned with the perception of supporting the proposal. The committee believed that C. Dyer could cite the appropriate goal and objective in the RecFIN(SE) Strategic Plan which supports the need for this project and R. Lukens stated he would provide C. Dyer with the appropriate document.

M. Osborn stated that NMFS has hired a new telephone contractor for the MRFSS. Overall, NMFS is happy with their work. However, with a new contractor, there is a learning curve and due to this there were several events that occurred which will affect the estimates for 1993. The first event was that the contractor was not getting information from people who were difficult to contact. The second was the contractor did not ask the specific question, "how many trips did you take in the last month?". The last issue was that the contractor threw the trip out if the person being interviewed did not know what county he/she were fishing. The contractor and NMFS have corrected these problems and the data base will be modified accordingly.

The meeting recessed at 5:40 p.m.

September 17, 1993

The meeting reconvened at 8:05 a.m.

Operations Plan

a. Status of current activities

H. Lazauski provided a list of tasks from the 1993 Operations Plan. Their status was distributed and the committee looked at the tasks individually. After reviewing the list, the committee agreed that all the activities identified in the 1993 Operations Plan have been examined, the 1993 tasks have been completed, the 1994-1995 tasks have been addressed, and work is currently being conducted to complete them in the allotted time frame. The list of tasks and their revised status is attached.

b. Development of 1994 Operations Plan

* A draft copy of the 1994 Operations Plan was distributed to the Committee which edited the document. S. Gordon noted that objectives in planning should be meaningful and measurable. It may be necessary to expand the narrative of certain sections for some of the tasks. H. Lazauski and R. Lukens stated that the RecFIN(SE) needs

to be careful not to set goals that cannot be accomplished and thus putting the program in a negative light. The Committee decided that some of the tasks needed to be more descriptive and measurable which will make it easier to defend the program during the review and evaluation process. The committee completed a thorough review of each task. After the review, R. Lukens moved to accept the 1994 Operations Plan as amended. An amended copy of the plan will be sent to the committee for their review. The motion was seconded and passed unanimously. The revised 1994 Operations Plan represents the administrative record for this portion of the meeting.

Discussion of Adequacy of Current MRF Programs for RecFIN (Goal 2, Objective 4)

H. Lazauski outlined the goals, objectives and the related tasks in the Operations Plan. The Committee determined how this task should be accomplished. H. Lazauski suggested that each agency provide a report concerning the programs which they are responsible for and the Committee could evaluate each one of these programs. R. Lukens stated that the approach of this task was to examine the results of the evaluations from the Biological/Environmental and Social/Economic Work Groups and from these reports, the Committee would evaluate ongoing programs in respect to providing the necessary marine recreational information and data. This task is the beginning of determining how the RecFIN(SE) can positively affect ongoing programs. A. Jones suggested that the first step might be to develop a list of data elements that are collected by each MRF program. M. Street noted that nothing can be done until the reports from the work groups are finalized. Then, a grading system needs to be developed and the Committee will rate each one of the programs for its adequacy. R. Lukens stated that initially the Committee should focus on the large, routine, ongoing surveys and programs. M. Osborn stated that this task is a three-step process: 1) what do we have and is it adequate? 2) what do we need? (listed as priorities); and 3) designing and implementing a program which meet those needs. The first step in this process is to develop a criteria for evaluating these program. The committee came up with several criteria such as: statistical validity; statistical precision; data accessibility; timeliness of data; compatibility and comparability; and the spatial and temporal scope of the survey. Using this criteria, the Committee will evaluate the MRF programs and develop recommendations from the evaluation process. It was agreed that the Committee should initially focus on the large, routine, ongoing surveys. M. Osborn stated that she would develop an outline of how the Committee will progress with the evaluation. For the next meeting the Committee will have this outline and a list of surveys that will be addressed. Although the Social/Economic Work Group report is not completed, the Committee decided to proceed with the evaluation of the major surveys, focusing on the biological and environmental aspects. In order to address this issue, there needs to be a full day provided. The Committee assigned people who will be responsible for providing information during the evaluation process for the following surveys:

MRFSS	Maury Osborn
NMFS Headboat	Albert Jones
NMFS Charterboat	Wayne Waltz
Billfish Tournament and Non-tournament	Ron Schmied
Texas surveys	Page Campbell
Puerto Rico surveys	Walter Padilla
U.S. Virgin Islands surveys	Ann Seiler

Other Business

* R. Lukens noted that, so far, the Committee has focused on the three-year pilot program and tasks from the goals and objectives, and has not thought about the program direction past 1995. It might be a good idea to begin thinking about what has been accomplished and where that will lead the program in the future. R. Lukens asked the Committee to begin considering this notion. There was a brief discussion concerning a logo for the RecFIN(SE). R. Lukens apologized for not getting the proposed logo removed from the inside cover of the Strategic Plan. He stated the staff was acting on the comments from the previous meeting that the Committee might like to develop a logo. M. Osborn stated that a logo is a good idea but it needs to be well-designed and an attention-grabber. The logo needs to be well thought out and representative of all participants in the program. After some discussion, M. Osborn moved that for the time being the RecFIN(SE) remain without a logo. The motion passed unanimously.

There being no further business, the meeting was adjourned at 11:30 a.m.

APPENDIX B.

1993 Operations Plan for the Recreational Fisheries Information Network in the Southeastern United States [RecFIN(SE)]

January 1, 1993 to December 31, 1993

I. INTRODUCTION

The RecFIN(SE) is a cooperative state-federal marine recreational fisheries (MRF) data collection program. It is intended to coordinate present and future MRF data collection and data management activities through cooperative planning, innovative uses of statistical theory and design, and consolidation of appropriate data into a useful data base system. This operations plan implements the RecFIN(SE) Strategic Plan for 1993.

II. MISSION AND GOALS

The mission of the RecFIN(SE) program is to cooperatively collect, manage, and disseminate MRF statistical data and information for the conservation and management of fishery resources in the Southeast Region¹ and to support the development and operation of a national program.

The four goals of the RecFIN(SE) are:

- planning, management, and evaluation of data collection and management activities;
- implementation of data collection activities;
- establishment and maintenance of a data management system; and
- support for the establishment of a national program.

¹The Southeast Region (the Region) includes the states of Alabama, Florida, Georgia, Louisiana, Mississippi, North Carolina, South Carolina, and Texas, and the territories of Puerto Rico and the U.S. Virgin Islands.

III. OPERATIONS

A. Data Collection and Management

Ongoing MRF surveys will be conducted by various state and federal agencies (RecFIN(SE) 1993). The RecFIN(SE) Committee will review all of these surveys and evaluate progress towards the integration of the surveys into the RecFIN(SE).

B. Committee/Work Group Activities

The 16 tasks below cover all 1993 objectives (see Section D) except for Objective 1 of Goal 1 which has been completed.

Task 1: Strategic Plan (Goal 1, Objective 2)

Objective: Develop a three-year Strategic Plan that outlines policies and protocols of the program.
Team Members: RecFIN(SE) Committee.
Approach: Through meetings and mail, the Committee will develop and complete a three-year Strategic Plan.
Resources: Travel costs/meeting costs, report costs, and inkind (time) and staff time.
Product: Strategic Plan.
Schedule: Strategic Plan completed by mid/late May.

Task 2: Annual Operations Plan, 1993 (Goal 1, Objective 3)

Objective: Develop 1993 Annual Operations Plan including identification of available resources, that implements the Strategic Plan.
Team Members: RecFIN(SE) Committee.
Approach: Through meetings and mail, the Committee will develop and complete an Annual Operations Plan for 1993.
Resources: Travel costs/meeting costs, report costs, and inkind (time) and staff time.
Product: 1993 Annual Operations Plan.
Schedule: Annual Operations Plan completed by mid/late May.

Task 3: Annual Operations Plan, 1994 (Goal 1, Objective 3)

Objective: Develop 1994 Annual Operations Plan including identification of available resources and revisions to work groups, that implements the Strategic Plan.
Team Members: RecFIN(SE) Committee.

Approach: Through meetings and mail, the Committee will develop and complete an Annual Operations Plan for 1994.
Resources: Travel costs/meeting costs, report costs, and inkind (time) and staff time.
Product: 1994 Annual Operations Plan.
Schedule: Annual Operations Plan completed by mid/late October.

Task 4: Information Dissemination (Goal 1, Objective 4)

Objective: Distribute program information to cooperators and interested parties.
Team Members: RecFIN(SE) Committee.
Approach: Through mail, via the Gulf States Marine Fisheries Commission, the Committee will distribute program information to cooperators and interested parties.
Resources: Copy and mailing expenses and inkind (time) and staff time.
Product: Education of interested parties concerning RecFIN(SE).
Schedule: This task will be an ongoing activity.

Task 5: Recreational Fishing Components & Data Priorities (Goal 2, Objective 1)

Objective: Identify components of the fishery (modes, areas, etc.) and required data priorities for each component.
Team Members: Biological/Environmental Work Group.
Approach: Through existing material and personal observations, identify all components of the marine recreational fishing universe by state/territory and quantify the units of effort within each component. Identify and prioritize data categories that fishery management agencies need for reaching and evaluating decisions. Accomplished by 1) conference calls 2) mail and 3) workshops, if necessary.
Resources: Travel costs/meeting costs, conference calls costs, report costs, and inkind (time) and staff time.
Product: Report.
Schedule: Report completed by September RecFIN(SE) meeting. Several work group meetings will be held during 1993.

Task 6: Biological/Environmental Data Elements (Goal 2, Objective 2)

Objective: Identify biological and environmental data elements required for each fishery component.
Team Members: Biological/Environmental Work Group.

Approach: Use GSMFC Marine Recreational Fishery Data Collection and Management Programs in the Gulf of Mexico. Special Report No. 10-WB and evaluate/modify as necessary for South Atlantic and Caribbean needs. This will be done for each fishery component by sub-region (matrix). Accomplished by 1) conference calls 2) mail and 3) workshops, if necessary.

Resources: Travel costs/meeting costs, conference calls costs, report costs, and inkind (time) and staff time.

Product: Report.

Schedule: Report completed by September RecFIN(SE) meeting. Several work group meetings will be held during 1993.

Task 7: Biological/Environmental Quality Assurance and Quality Control (Goal 2, Objective 3)

Objective: Identify and determine standards for biological and environmental data collection, including statistical, training, and quality assurance and quality control standards.

Team Members: Biological/Environmental Work Group.

Approach: Review existing quality assurance and quality control documents and modify as necessary for application to RecFIN(SE). Accomplished by 1) conference calls 2) mail and 3) workshops, if necessary.

Resources: Travel costs/meeting costs, conference calls costs, report costs, and inkind (time) and staff time.

Product: Report.

Schedule: Report completed by September RecFIN(SE) meeting and several work group meetings will be held during 1993.

Task 8: Social/Economic Data Elements (Goal 2, Objective 2)

Objective: Identify sociological and economic data elements required for each fishery component.

Team Members: Social/Economic Work Group.

Approach: Determine how sociological and economic data should be used in recreational fisheries management. Then determine which data elements are necessary for evaluation and decision-making by fishery managers. Review how social and economic information should be used by fishery managers in evaluating projected and realized impacts of fishery management actions and identify needed data elements to support these uses. Existing data bases will be reviewed to identify data gaps and recommendations will be

formulated for closing these gaps. Accomplished by holding a workshop with invited experts to determine necessary data elements.

Resources: Workshop costs, travel costs, conference calls costs, report costs, and inkind (time) and staff time.
Product: Report.
Schedule: Workshop scheduled for late 1993 or early 1994, pending availability of funds.

Task 9: Social/Economic Quality Assurance and Quality Control (Goal 2, Objective 3)

Objective: Identify and determine standards for sociological and economic data collection, including statistical, training, and quality assurance and quality control standards.
Team Members: Social/Economic Work Group.
Approach: Determine standards for collection and management of social and economic data. Accomplished by workshops.
Resources: Workshop costs, travel costs, conference calls costs, report costs, and inkind (time) and staff time.
Product: Report.
Schedule: Schedule will be determined from the outcome of the workshop.

Task 10: Identification and Evaluation of Current Programs (Goal 2, Objective 4)

Objective: Identify and evaluate the adequacy of current programs for meeting RecFIN(SE) requirements.
Team Members: RecFIN(SE) Committee.
Approach: Evaluate reports from Biological/Environmental and Social/Economic Work Groups in relation to existing programs.
Resources: Travel costs/meeting costs, report costs, and inkind (time) and staff time.
Product: Report.
Schedule: The Committee will discuss this issue at the September RecFIN(SE) meeting.

Task 11: Location and Administrative Responsibility for RecFIN(SE) Data Management System (Goal 3, Objective 1)

Objective: Identify the location and administrative responsibility for a centralized RecFIN(SE) data management system.
Team Members: RecFIN(SE) Committee

Approach: Determine the agency/organization with the capability for housing the RecFIN(SE) data base and the potential for staffing the data management system. Accomplished by 1) workshops 2) conference calls and 3) mail.

Resources: Travel/meeting costs, conference calls costs, report costs, and inkind (time) and staff time.

Product: Recommendations.

Schedule: The Committee decided the National Marine Fisheries Service Headquarters in Silver Spring, Maryland, will house and administer the RecFIN(SE) data management system.

Task 12: Equipment and Software Needs (Goal 3, Objective 2)

Objective: Evaluate current hardware, software and communication capabilities of program partners and make recommendations for support and upgrades.

Team Members: Data Base Work Group.

Approach: Review questionnaire instrument developed for SEAMAP which was used to assess equipment and software capabilities for SEAMAP partners, and modify as appropriate for RecFIN(SE). Send modified questionnaire to appropriate agencies. Accomplished by 1) conference calls, 2) mail, and 3) meetings.

Resources: Travel/meeting costs, conference calls costs, report costs, and inkind (time) and staff time.

Product: Report.

Schedule: Inventory of computer capabilities for participants completed by the September RecFIN(SE) meeting. Several work group meetings and/or conference calls will be held during 1993.

Task 13: Standards/Protocols/Documentation for Data Management (Goal 3, Objective 4)

Objective: Develop standard protocols and documentation for data formats, input, editing, quality control, storage, access, transfer, dissemination, and application.

Team Members: Data Base Work Group.

Approach: Review standards/protocols/documentation for existing data management systems (SEAMAP, MRFSS, CSP, etc.) and modify for RecFIN(SE) application. Accomplished by 1) conference calls 2) mail and 3) meetings.

Resources: Travel/meeting costs, conference calls costs, report costs, and inkind (time) and staff time.

Product: Report.

Schedule: Several work group meetings and/or conference calls will be held during 1993 to address this issue.

Task 14: Data base Identification and Prioritization of Existing Data Bases (Goal 3, Objective 5)

Objective: Identify and prioritize existing historical data bases for integration into the centralized data base.

Team Members: Biological/Environmental, Data Base and Social/Economic Work Groups.

Approach: Send questionnaire to all agencies who are conducting or have conducted recreational surveys. Each work group will prioritize the existing data bases according to their main interest. Accomplished by 1) mail and 2) meetings.

Resources: Travel/meeting costs, report costs, and inkind (time) and staff time.

Product: Report.

Schedule: Several work group meetings and/or conference calls will be held during 1993 to address this issue.

Task 15: Long-term National Program Planning (Goal 4, Objective 1)

Objective: Provide for long-term national program planning.

Team Members: RecFIN(SE) Committee.

Approach: The RecFIN(SE) Committee members, GSMFC staff and ASMFC staff will attend PacFIN and Northeast Statistical meetings and coordinate activities with the Pacific States Marine Fisheries Commission (PSMFC) and PacFIN on the West Coast. Accomplished by 1) mail and 2) meetings.

Resources: Travel/meeting costs, report costs, and inkind (time) and staff time.

Product: Establishment of national RecFIN and continued planning with other regional RecFIN programs.

Schedule: The planning aspect of this task will be an ongoing activity.

Task 16: Coordination, Consistency and Comparability with Other RecFIN Programs (Goal 4, Objective 2 and Objective 3)

Objective: Coordinate RecFIN(SE) with other regional RecFIN programs and encourage consistency and comparability among regional programs over time.

Team Members: RecFIN(SE) Committee.

Approach: The RecFIN(SE) Committee members, GSMFC staff and ASMFC staff will coordinate activities with the PSMFC and PacFIN on the West Coast. The MRFSS staff is revising files and will get input from the RecFIN(SE) Committee. Accomplished by 1) mail and 2) meetings.

Resources: Travel/meeting costs, report costs, and inkind (time) and staff time.

Product: Ensure adequate information exchange, consistency and comparability between all regional RecFIN programs.

Schedule: This task will be an ongoing activity.

C. Administrative Activities

Coordination and administrative support of RecFIN(SE) will be accomplished through administrative structures established in the Caribbean, Gulf of Mexico, and South Atlantic areas. Major tasks involved in the coordination and administration of the various levels of RecFIN(SE) include but are not limited to the following:

- Work closely with the RecFIN(SE) Committee in all aspects of program coordination, administration, and operation;
- Implement plans and program directives approved by the RecFIN(SE) Committee;
- Provide coordination and logistical support, including communications and organization of meetings for the RecFIN(SE) Committee, subcommittees, and work groups;
- Develop and/or administer cooperative agreements, grants, and contracts;
- Serve as liaison between the RecFIN(SE) Committee, other program participants, and other interested organizations;
- Assist the RecFIN(SE) Committee in preparation or review of annual spending plans;
- Prepare annual operations plans under the direction of the RecFIN(SE) Committee;
- Prepare and/or supervise and coordinate preparation of selected documents, including written records of all meetings;
- Distribute approved RecFIN(SE) information and data in accordance with accepted policies and procedures as set forth by the RecFIN(SE) Committee;

- Assist in the identification of regional and geographic needs that can be satisfied through RecFIN(SE) activities;
- Seek funding for RecFIN(SE) activities as the need develops; and
- Conduct or participate in other activities as identified.

D. Time Table for RecFIN(SE)

	<u>1993</u>	<u>1994</u>	<u>1995</u>
Goal 1:			
Objective 1	X		
Objective 2	X		
Objective 3	X	X	X*
Objective 4	X	X	X
Objective 5			X
Goal 2:			
Objective 1	X		
Objective 2	X	X	
Objective 3	X	X	
Objective 4	X	X	
Objective 5		X	X
Objective 6		X	X
Goal 3:			
Objective 1	X		
Objective 2	X	X	
Objective 3		X	
Objective 4	X	X	X
Objective 5	X	X	
Objective 6		X	X
Goal 4:			
Objective 1	X	X	X
Objective 2	X	X	X
Objective 3	X	X	X

* If program continues.

E. References

RecFIN(SE). 1993. Marine recreational fisheries data collection project summaries. REC93-2. 78 pp.

Administrative Subcommittee

Walter Padilla
Puerto Rico Department of Natural
Resources

Jack Dunnigan
Atlantic States Marine Fisheries
Commission

Ronald Lukens
Gulf States Marine Fisheries Commission

Henry Lazauski
Alabama Department of Conservation and
Natural Resources

Maury Osborn
National Marine Fisheries Service
Silver Spring

Albert Jones
National Marine Fisheries Service
Southeast Fisheries Science Center

Wilson Laney
U.S. Fish and Wildlife Service
South Atlantic Fisheries Coordination
Office

Social/Economic Work Group

Ron Schmied
National Marine Fisheries Service
Southeast Regional Office

Mike Street
North Carolina Division of Marine
Fisheries

Steven Atran
Gulf of Mexico Fishery Management
Council

Jack Dunnigan
Atlantic States Marine Fisheries
Commission

Ann Seiler
Virgin Islands Division of Fish and
Wildlife

Biological/Environmental Work Group

Paul Phalen
North Carolina Division of Marine
Fisheries

Albert Jones
National Marine Fisheries Service
Southeast Fisheries Science Center

Wayne Waltz
South Carolina Wildlife and Marine
Resources Department

Ann Seiler
Virgin Islands Division of Fish and
Wildlife

Maury Osborn
National Marine Fisheries Service
Silver Spring

Tom Van Devender
Mississippi Bureau of Marine Resources

Thomas Schmidt
South Florida Research Center
Everglades National Park

Lisa Kline
Atlantic States Marine Fisheries
Commission

Data Base Work Group

Paul Phalen
North Carolina Division of Marine
Fisheries

Ken Savastano
National Marine Fisheries Service
Stennis Space Center

Sylvia Cabrera
U.S. Fish and Wildlife Service
Division of Federal Aid

Ken Haddad
Florida Department of Natural Resources
Marine Research Institute

John Witzig
National Marine Fisheries Service
Silver Spring

Cost Element Breakdown

1. Telephone

Conference Calls (estimated @ \$125 each)
2 Work Group calls/2 Committee calls
4 calls X \$125 per call = \$ 500

2. Meeting Cost

Includes meeting room charges, rental for audio
visual and/or other equipment or needs
7 meetings X \$150 per meeting = \$1,050

3. Travel

a. RecFIN(SE) Committee Meetings
2 days @ \$175 per day
X 20 members = 7,000
X 3 meetings = 21,000

b. Administrative Subcommittee
1 day @ \$175 per day
X 7 members = 1,225
X 1 meeting = 1,225

c. Biological/Environmental Work Group
1 day @ \$175 per day
X 7 members = 1,225
X 1 meeting = 1,225

d. Social/Economic Work Group
1 day @ \$175 per day
X 6 members = 1,050
X 1 meeting = 1,050

e. Data Base Work Group
1 day @ \$175 per day
X 5 members = 875
X 1 meeting = 875

f. TOTAL TRAVEL \$25,375

TOTAL PROPOSED BUDGET \$26,925

APPENDIX C.

SOCIAL/ECONOMIC WORK GROUP

MARCH 26, 1993

DRAFT 1, GOAL 2/OBJ. 2

Social and Economic Data Elements

Background and Purpose

When marine fishery resources in the Southeast were abundant and supported all user demands without danger of over-exploitation, evaluations of management options were based primarily on their expected or realized effects on fishery resources. Now that most major fishery stocks are fully utilized, stressed, or overfished and allocations among competing users are necessary, managers must also evaluate the likely impacts of management options on local and regional economies, human populations, and social systems.

These additional economic and social assessments are needed to effectively achieve resource management goals with the least possible economic and social disruptions. To carry out these assessments, social and economic data must now be collected along with biological information. The objective of this element of the RecFIN program is to achieve consensus on: 1) how social and economic information can (should) be used in conserving and managing marine fisheries, 2) the types of data that need to be collected, and 3) the most appropriate methods for collecting these data.

Social and Economic Impact Assessments

While economic and social impact assessments are related and even overlap to some extent, they differ considerably in focus, underlying questions, methods and approaches. The same or similar data may be used in both assessments but they may be analyzed and interpreted differently depending on whether the analysis is economic or social in nature. Economic impact assessments (EIAs) determine how efficiently investments of capital and other resources are returned in present or future benefits to society, i.e. do the economic benefits of a management action outweigh the costs. Benefits and costs are typically expressed in terms of resource supply and demand, prices, jobs, operating costs, local trade, economic efficiency, and consumer surplus.

Social impact assessments (SIAs) differ from EIAs in that they seek to estimate the impact of management actions on the quality of peoples lives. They attempt to determine who will be affected and how they will be affected. They also measure changes in the social fabric and stability of a fishery and associated fishing communities. Further, SIAs seek to predict or measure changes in relationships between persons or groups directly involved in a given fishery, and between these persons/groups and local, state or regional community social systems.

Taken together, economic and social impact assessments go beyond biological factors and evaluate a broader array of important characteristics including: a) present participation in the fishery, b) historical fishing practices, c) the economics of the fishery, d) the capability of participating fishermen/vessels to engage in other fisheries, e) the cultural and social framework of the fishery, f) population and employment changes, g) user conflicts, h) leisure/recreation impacts, i) health and safety impacts, j) community growth or decline, k) changes in natural resource use patterns, and l) other relevant factors.

Social and Economic Data Needs

There have been numerous attempts to identify social and economic data needed to conduct meaningful social and economic impact assessments. Typically, a number of major data categories have emerged:

- Sociodemographic data (e.g., age, sex, ethnicity)
- Trip data (e.g., duration, participants, catch)
- Catch disposition (e.g., eaten, sold, given away)
- Economic value/demand
- Expenditures data
- Attitudinal data (e.g., motivation, satisfaction)
- User group conflict data
- Knowledge of and preferences for management measures
- Experience/participation in other fisheries
- Sources of information

These data groupings can be further defined producing detailed lists of data elements to be targeted in data collections. As shown in Table 1, the Gulf States Marine Fisheries Commissions' Data Management Subcommittee published such a list in 1992 as part of a larger report "Marine Recreational Fishery Data Collection and Management Programs in the Gulf of Mexico Region: Identification and Resolution of Issues." These data categories and elements need to be examined further in light of increasing requirements for more complete assessments of state and federal marine fishery conservation and management programs.

Recommended Approach for Task Completion

The Social/Economic Work Group proposes to formulate its recommendations regarding the collection and use of social and economic data by convening an expert panel of economists and social scientists and seeking their guidance on:

- 1) Appropriate EIA and SIA methods
- 2) Social and economic data needed to conduct these assessments
- 3) The current availability of such data
- 4) Appropriate methods to collect needed data.

The Work Group will develop an estimate of funds required to complete this task and pursue potential funding sources.

DATA BASE WORK GROUP REPORT

The Data Base Work Group met via a conference call on April 27, 1993.

- * The first order of business was to elect a work group leader. John Witzig was unanimously elected.
- * Next, there was a discussion concerning the goals and objectives pertaining to the Data Base Work Group.
 - Goal 3, Objective 1: It was completed and NMFS-HQ volunteered to house the RecFIN(SE) data management system.
 - Goal 3, Objective 2: The group decided the survey utilized by SEAMAP to develop their data management system would be a good starting point for the RecFIN(SE) system. The work group reviewed the document and made the necessary changes. The modified survey will be sent to the RecFIN(SE) Committee for completion by each agency.
 - Goal 3, Objective 4: Several work group members are compiling documentation of the standard protocols pertaining to data management for major data collection programs such as SEAMAP, MRFSS and CSP. Once these protocols are collected, GSMFC will distribute this information to the work group for their review. The work group will review this material and begin formulating methods for modifying the protocols for application to RecFIN(SE).
 - Goal 3, Objective 5: The work group believed that it was not in the purview of the work group to be the only group prioritizes the projects. The group believed the Biological/Environmental and Social/Economic Work Groups should also be involved in the prioritization. It was noted that the document Marine Recreational Fisheries Data Collection Project Summaries contains most of the MRF data collection projects in the Southeast Region. It was suggested that the projects be summarized into a table format and that all three work groups rank the projects for inclusion into the RecFIN(SE) data management system specific to their area of expertise. The project summaries table and the Marine Recreational Fisheries Data Collection Project Summaries have been sent to the three groups.

APPENDIX D.

RecFIN(SE) GOALS AND OBJECTIVES

- Goal 1:** To plan, manage, and evaluate a coordinated state-federal MRF data collection program for the Southeast Region.
- Objective 1:** To establish a RecFIN(SE) Committee consisting of MOU signatories or their designees to develop, implement, monitor, and evaluate the program.
 - Objective 2:** To complete during the first year a three-year Strategic Plan that outlines policies and protocols of the program.
 - Objective 3:** To develop annual operations plans, including identification of available resources, that implement the Strategic Plan.
 - Objective 4:** To distribute program information to cooperators and interested parties.
 - Objective 5:** To conduct a program review after two years of operation to evaluate the program's success in meeting needs in the Southeast Region.
- Goal 2:** To implement a coordinated state-federal MRF data collection program for the Southeast Region.
- Objective 1:** To identify the components of the fishery (modes, areas, etc.) and the required data priorities for each component.
 - Objective 2:** To identify data elements (environmental, biological, sociological, economic) required for each fishery component.
 - Objective 3:** To identify and determine standards for data collection, including statistical, training, and quality assurance and quality control standards.
 - Objective 4:** To identify and evaluate the adequacy of current programs for meeting the RecFIN(SE) requirements.
 - Objective 5:** To coordinate, integrate, and augment, as appropriate, data collection efforts to meet the RecFIN(SE) requirements.
 - Objective 6:** To evaluate and recommend innovative data collection technologies.

Goal 3: To establish and maintain an integrated, centralized MRF data management system for the Southeast Region.

Objective 1: To identify the location and administrative responsibility for a centralized the RecFIN(SE) data management system.

Objective 2: To evaluate the current hardware, software, and communication capabilities of program partners and make recommendations for support and upgrades.

Objective 3: To design, implement, and maintain an MRF data management system to accommodate fishery management/research and other needs (e.g., trade and tourism).

Objective 4: To develop standard protocols and documentation for data formats, input, editing, quality control, storage, access, transfer, dissemination, and application.

Objective 5: To identify and prioritize existing historical data bases for integration into the centralized data base.

Objective 6: To evaluate and recommend innovative, cost-effective information management technologies.

Goal 4: To support the development and operation of a national program to collect, manage, and disseminate MRF information for use by states, territories, councils, interstate commissions, and federal marine fishery management agencies.

Objective 1: To provide for long-term national program planning.

Objective 2: To coordinate the RecFIN(SE) with other regional RecFIN programs.

Objective 3: To encourage consistency and comparability among regional programs over time.